

# VisualKPI

A personalized real-time view of operations across all your data sources and on any device.



Transpara™



Thousands of Sources Supported

- Targets
- Limits
- Geolocation
- Hierarchy
- Alerts
- Ownership
- Custom



## Read Data in Real-Time

Leave your data where it makes sense and read it in real-time, no matter how many sources.

## Simplify by Adding Context

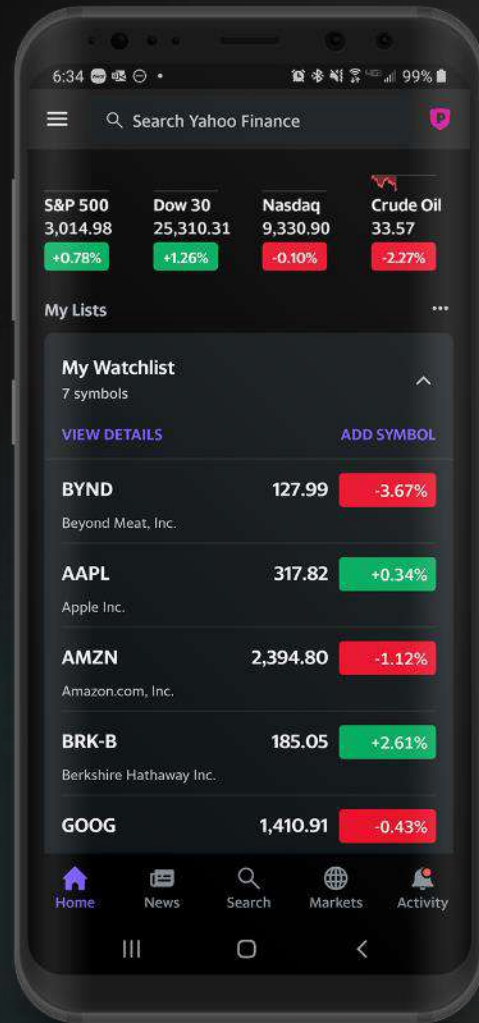
Transform raw data into intuitive KPIs everyone can understand and compare, with no coding.

## Visualize & Personalize

At-a-glance results, regardless of location or device. Personalized and role-based dashboards.

## Notifications Tell You When to Look

Visual KPI notifies you when (and where) things go wrong and can escalate if things get worse.

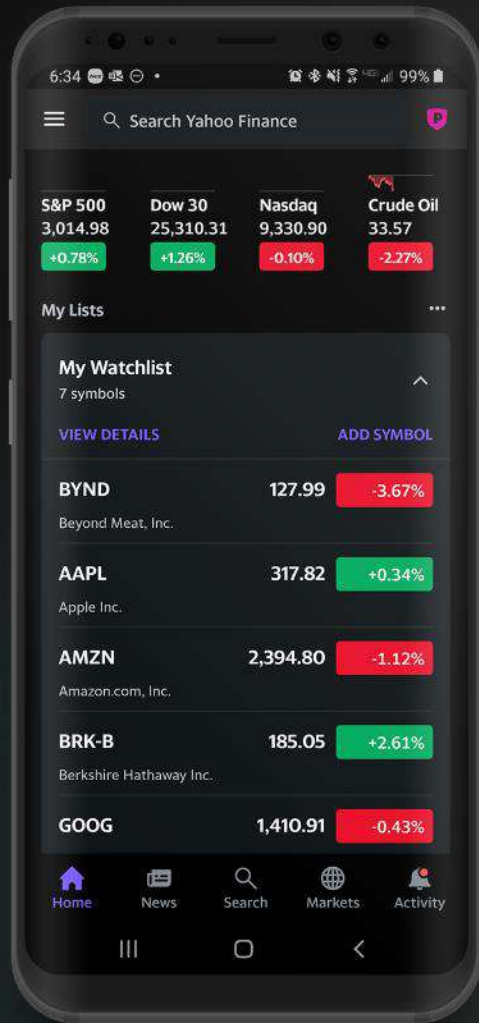


Obvious

Real-time

Glance, or drill in

Should I relax or panic?



One Source



## Thousands of Sources

Relational Data | IoT | Time-Series | IT, Security & Cloud Monitoring | ERP  
Vertical Industry Applications | Web Services | Data Warehouses | Manual Data  
SCADA | AI | Machine Learning | Weather | Pricing | More

# Traction

- ▶ Customers 25+ Countries
- ▶ 10,000+ Users
- ▶ 400+ Software Releases
- ▶ Key Industries
  - ▶ Energy & Utilities
  - ▶ Oil & Gas
  - ▶ Manufacturing
  - ▶ Telecom
  - ▶ IT, Cloud & Data Center
  - ▶ Pharmaceuticals
  - ▶ Mining
  - ▶ Infrastructure



“When the executives check Visual KPI before doing anything else in the morning, you know it’s a must-have tool.”



Steve Noel  
Exelon Generation

86%

reduction in unplanned  
downtime

74%

reduction in crisis response  
time

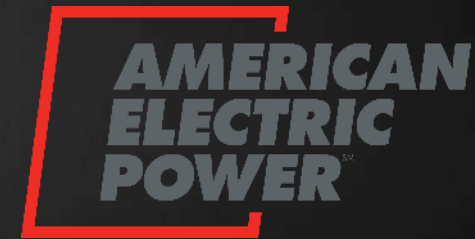
90%

reduction in emergency  
maintenance calls

82%

reduction in project cost  
(days/weeks, not months)

"You guys are the best vendor I have ever worked with."



Steve Mulroy  
AEP





Live Covid-19 Tracking  
Try it yourself now...

[transpara.com/covid19](https://transpara.com/covid19)





# Thank you!

Robert Hylton | [robert@transpara.com](mailto:robert@transpara.com) | +1-206-965-5126



[www.transpara.com](http://www.transpara.com)

# Appendix



# Building Blocks for Success

Key questions to explore – for pilots or production

## ▶ Attribute Examples

- ▶ Size
- ▶ Brand
- ▶ Type
- ▶ Class
- ▶ Level
- ▶ Etc.

## ▶ Hierarchy Examples

- ▶ By geography
- ▶ By function
  - ▶ Operations
  - ▶ Safety
  - ▶ Finance
- ▶ By asset class
- ▶ By role
- ▶ Etc.

## ▶ Dashboards

- ▶ Similar to hierarchy options

## ▶ KPIs

- ▶ Think through the most critical KPIs for each level of the hierarchy
  - ▶ Business metrics
  - ▶ Operations metrics
  - ▶ Site metrics
  - ▶ Maintenance metrics
  - ▶ Downtime metrics
  - ▶ Safety metrics
  - ▶ Device or asset metrics

## ▶ Target & Limits

- ▶ For each KPI, think through the thresholds/limits that would define various degrees of status (good/bad, high/low). Who defines them?
- ▶ Min & max is also important
- ▶ Are they static or dynamic (coming from a data source)?
- ▶ Do some or all of your KPIs have targets?

## ▶ Data Sources

- ▶ Where does your most important data live?
- ▶ What types of data sources are required:
  - ▶ Relational/SQL data
  - ▶ Time-series
  - ▶ Web services/API
  - ▶ OLAP/data warehouse
  - ▶ Manual data entry

## ▶ Notifications

- ▶ Do you want proactive alerts?
- ▶ Which ones?
- ▶ Which of your KPIs are leading indicators?
- ▶ Who will be the key recipients of notifications (which roles)?

# Visual KPI in Energy & Utilities



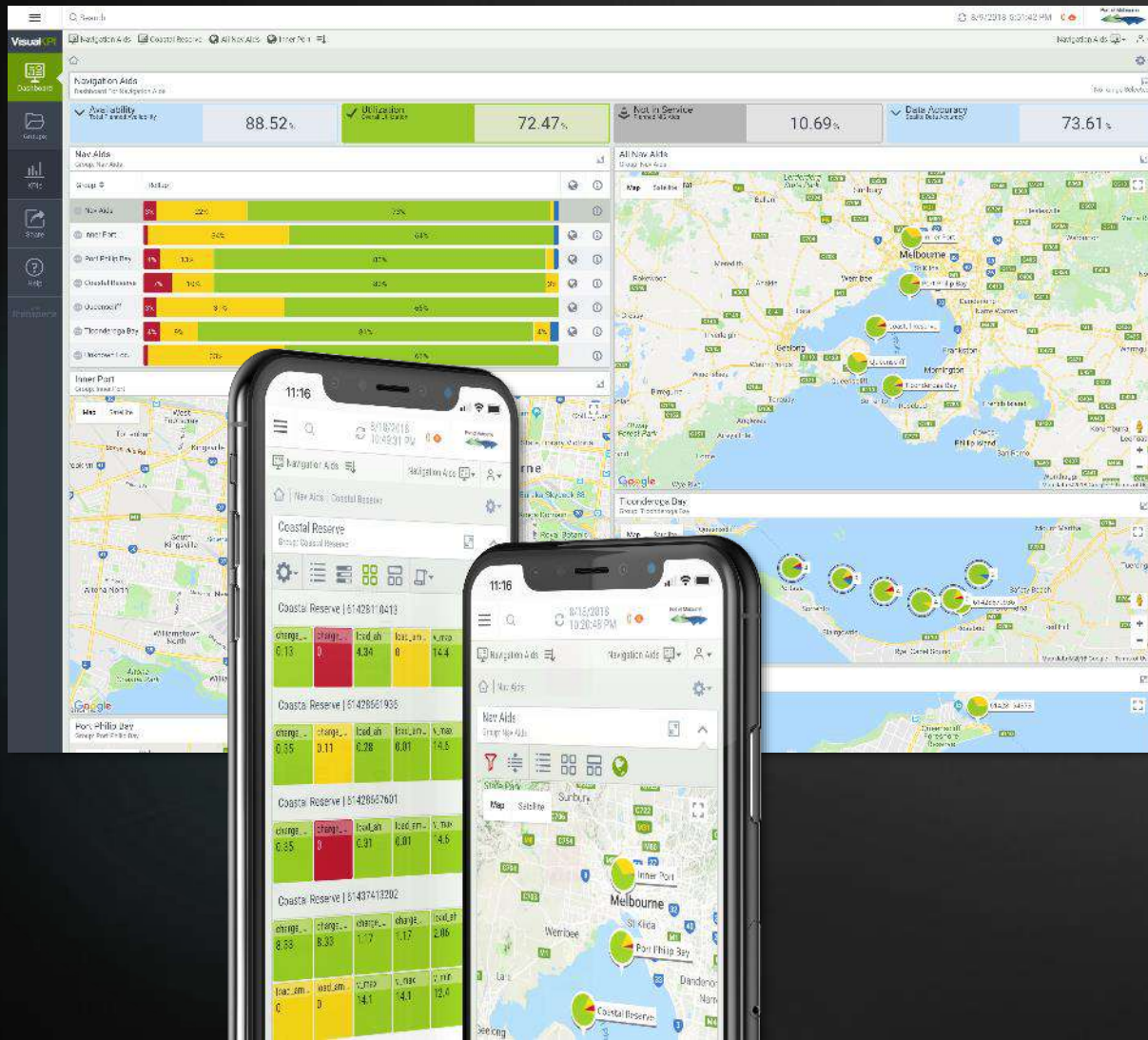
- ▶ Used in power generation, T&D and commercial trading
- ▶ Perfect for renewables
- ▶ Outage management / situational awareness (e.g. weather)
- ▶ Trading optimization through real-time supply / demand monitoring
- ▶ Field staff optimization (T&D)
- ▶ Elimination of unplanned downtime
- ▶ Predictive maintenance & OEE
- ▶ Regulatory / environmental compliance

# Visual KPI in Telecommunications



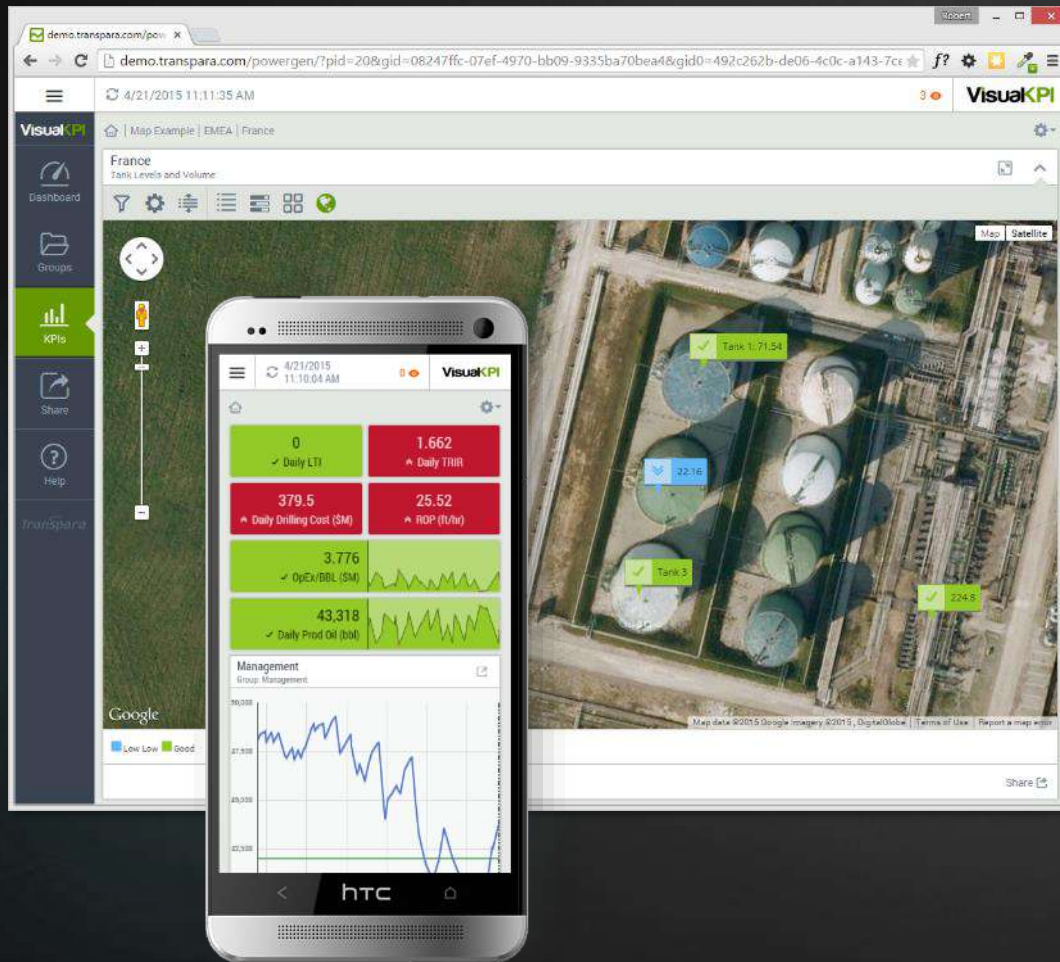
- ▶ Ideal for network operations, OSS, satellite, wireless, mobile and more
- ▶ Support for high-speed (sub-second) and high-volume data
- ▶ Brings disparate systems together in real-time
- ▶ Condition-based and escalating alerts
- ▶ Downtime management and real-time cause analysis
- ▶ Customer experience monitoring and support volume/ticket monitoring
- ▶ Equipment health / OEE
- ▶ Crisis management / situational awareness
- ▶ External data monitoring and correlation (weather, fires, power)

# Visual KPI for Smart Cities



- ▶ Ideal for telecommunications, energy, emergency services, safety, environmental, infrastructure, governance, traffic, smart meters/AMI, etc.
- ▶ System of systems designed to aggregate many silos into a single real-time application
- ▶ Obvious KPIs for surfacing needles in the haystack automatically
- ▶ Mixes internal (IoT, legacy, etc.) and external data (weather, fire, environmental), on the fly without the need to move data or a central data warehouse
- ▶ Crisis management / situational awareness
- ▶ Support for high-speed (sub-second) and high-volume data
- ▶ Condition-based and escalating alerts across many systems

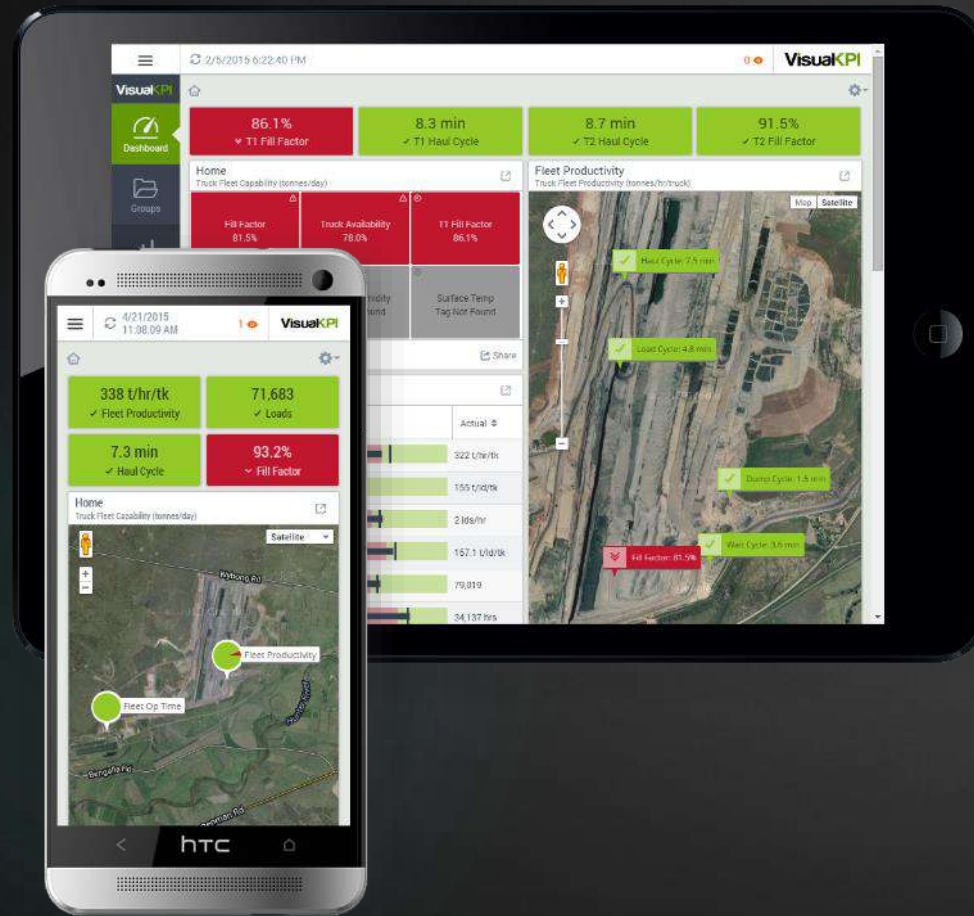
# Visual KPI in Oil & Gas



- ▶ Used in upstream, midstream (Incl. pipeline) and downstream
- ▶ Crisis management / situational awareness
- ▶ Eliminate unplanned downtime
- ▶ Reduce waste & increase throughput
- ▶ Regulatory / environmental
- ▶ Equipment maintenance & OEE
- ▶ Optimize profits by aggregating real-time market and production metrics



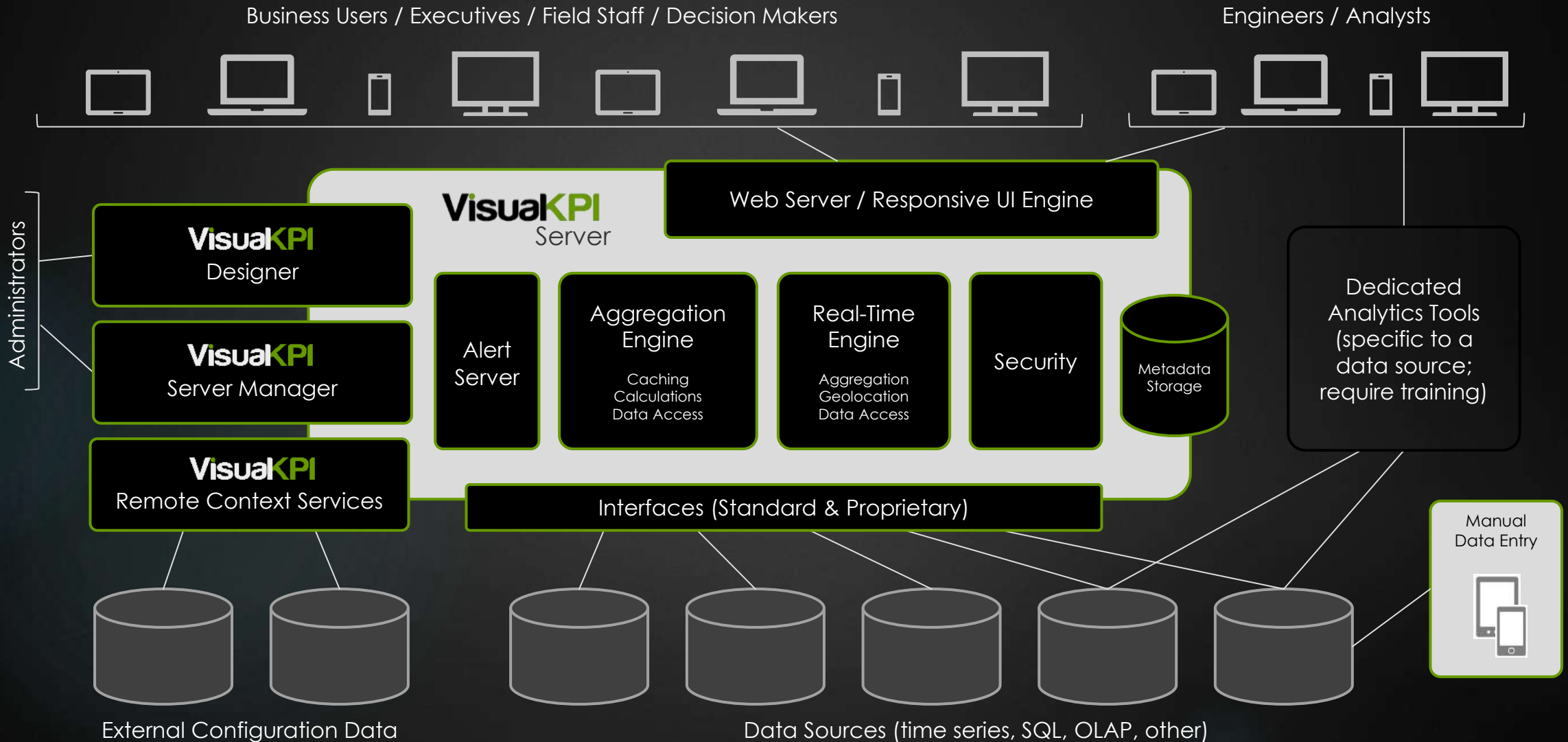
# Visual KPI in Mining



- ▶ Used in open pit, underground, material handling, concentrate and logistics
- ▶ Increased throughput
- ▶ Reduced waste & cycle times
- ▶ Staff performance monitoring
- ▶ Eliminate unplanned downtime
- ▶ Crisis management / situational awareness
- ▶ Regulatory / Environmental
- ▶ Equipment maintenance & OEE

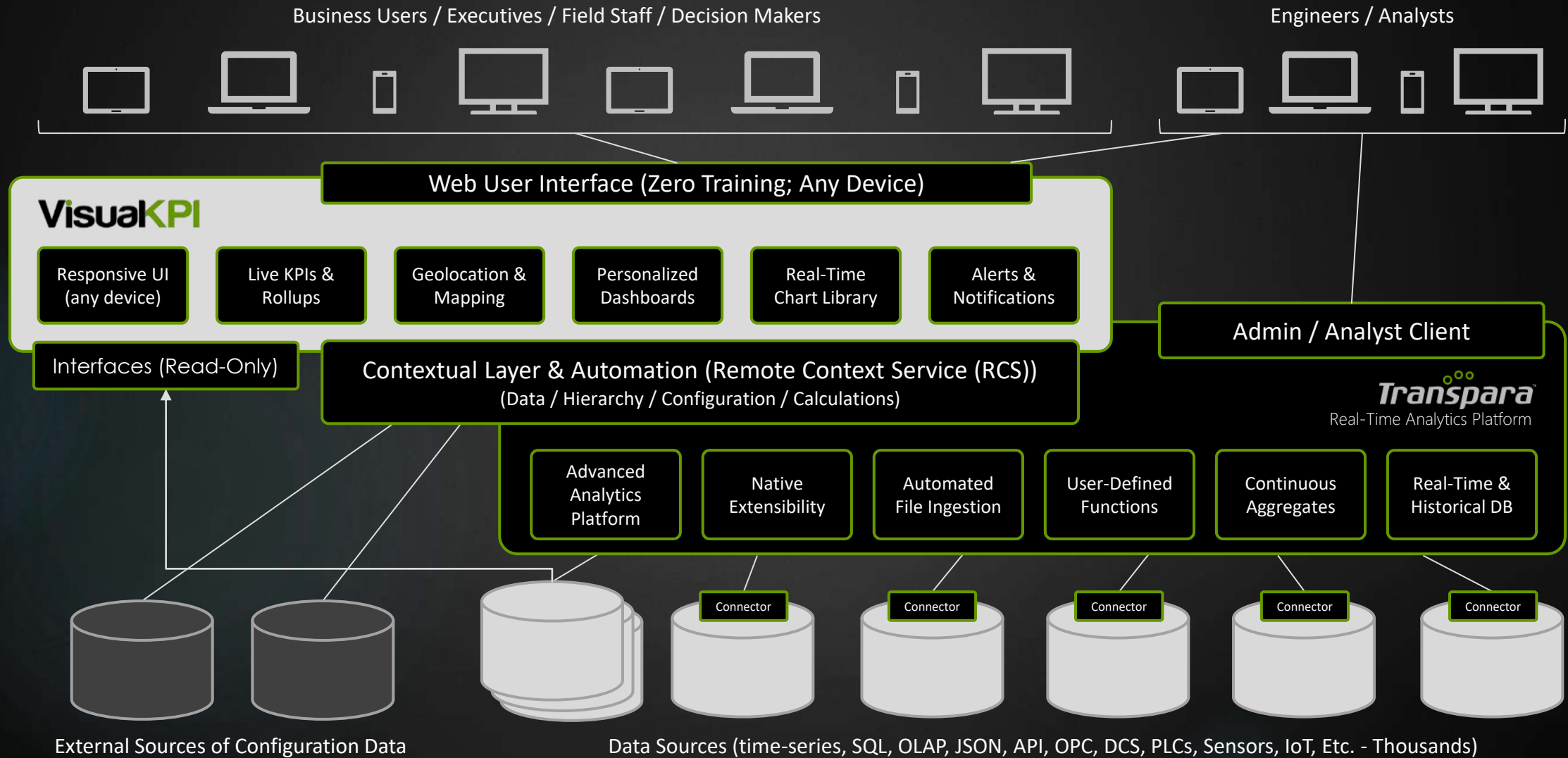
# Visual KPI Architecture

On-Premise or Customer-Hosted (Private or Public Cloud)



# Transpara Platform Architecture

On-Premise or Customer-Hosted (Private or Public Cloud)



# Recent Features

- ▶ Automatable dashboard creation (RCS)
- ▶ Location history on GeoMaps (location trails)
- ▶ Status History Trends and sparkline view
- ▶ Performance monitoring system & interface
- ▶ Dark theme
- ▶ Live search / ad-hoc groups
- ▶ Embedded content object (HTML)
- ▶ Client/server time toggle
- ▶ Multi-language, including "add your own"
- ▶ Time-bound dashboards / reporting
- ▶ Image & text dashboard widgets
- ▶ OS/soft AF Event Frame support
- ▶ Target/limit generator
- ▶ Trend comments (threaded)
- ▶ SPC control charts
- ▶ Bar charts (stacked/grouped; vertical/horizontal)
- ▶ Box Plot, Pareto, XY Plot, Gantt and Pie charts
- ▶ Group map
- ▶ Table search and table time ranges
- ▶ Group analytics w/automatic pareto chart
- ▶ All screens & objects fully embeddable
- ▶ 10 new custom status options
- ▶ New interfaces: Zabbix, Splunk, vmware, Evoqua, PJM, GE Proficy, Cumulocity, Xompass, Quandl, NIWNAS, etc.
- ▶ More coming very month: [release notes](#)

